

CITY OF RAVENSWOOD

RAVENSWOOD, WV

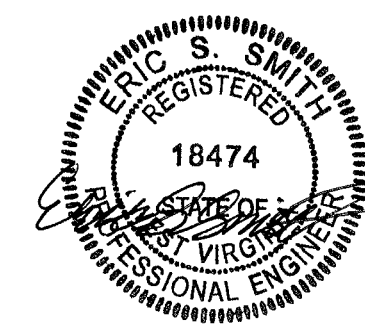
MCINTOSH HOUSE RENOVATION



Architects • Engineers • Surveyors

11283 Emerson Avenue Phone: (304) 464-5305
Parkersburg, West Virginia 26104 Fax: (304) 464-4428

STRUCTURAL
REGISTERED PE:



DATE

ARCHITECTURAL
REGISTERED ARCHITECT:



11/16/2021

CONSTRUCTION
DOCUMENTS
NOVEMBER 16, 2021
PROJECT NUMBER: 2211052

TABLE ABBREVIATIONS

| ABBREVIATIONS | |
|---------------|------------------------------------|
| AC | AIR CONDITIONING UNIT |
| ACT | ACOUSTICAL CEILING TILE |
| ADD | ADDITIONAL |
| ADJ | ADJUSTABLE |
| AFC/F/G | ABOVE FINISHED CEILING/FLOOR/GRADE |
| AHU | AIR HANDLING UNIT |
| ALUM | ALUMINUM |
| APPX | APPROXIMATELY |
| ARCH | ARCHITECT(URAL) |
| BD | BOARD |
| BIT | BITUMINOUS |
| BL | BUILDING LINE |
| BLDG | BUILDING |
| BLK | BLOCK |
| BLKG | BLOCKING |
| BM | BEAM/BENCH MARK |
| BOF/P | BOTTOM OF FOOTER/PIPE |
| BOT | BOTTOM |
| BRG | BEARING |
| BUR | BUILT-UP ROOFING |
| CB | CATCH BASIN |
| CER | CERAMIC |
| CIP | CAST-IN-PLACE |
| CL | CENTERLINE |
| CLG | CEILING |
| CLR | CLEARANCE |
| CLO | CLOSET |
| CMU | CONCRETE MASONRY UNIT |
| CJ | CONSTRUCTION/CONTROL JOINT |
| CO | CLEANOUT |
| COL | COLUMN |
| CONC | CONCRETE |
| CONN | CONNECTION |
| CONST | CONSTRUCTION |
| CONT | CONTINUOUS |
| CUB | COLUMN UTILITY BOX |
| DBO | DESIGN BY OTHERS |
| DCBO | DESIGN & CONSTRUCTION BY OTHERS |
| DET | DETAIL |
| DN | DOWN |
| D&R | DEMOLISH & REMOVE |
| DR | DOOR |
| DS | DOWNSPOUT |
| DWG | DRAWING |
| EA | EACH |
| ED | EDGE DISTANCE |
| EF | EACH FACE |
| EJ | EXPANSION JOINT |
| EL | ELEVATION |
| ENC | ENCLOSURE |
| EOP/W | EDGE OF PAVEMENT/WALK |
| EQ | EQUAL |
| EQUIP | EQUIPMENT |
| ES | EACH SIDE |
| EW | EACH WAY/EYE WASH |
| EW | ELECTRIC WATER COOLER |
| EXH | EXHAUST |
| EXIST | EXISTING |
| EXT | EXTERIOR |
| FBO | FURNISHED BY OTHERS |
| FC | FINISHED CEILING |
| FD | FLOOR DRAIN/FIRE DAMPER |
| FDN | FOUNDATION |
| FF | FINISHED FLOOR |
| FFT | FINISHED FLOOR TRANSITION |
| FH | FIRE HYDRANT |
| FHC | FIRE HOSE CABINET |
| FIXT | FIXTURE |
| FLR | FLOOR |
| FOC/F/M | FACE OF CONCRETE/FINISH/MASONRY |
| FS | FAR SIDE |
| FIN | FINISHED |
| FR | FIRE RATED |
| FTG | FOOTING |
| FUB | FLOOR UTILITY BOX |
| GA | GAUGE/GAGE |
| GALV | GALVANIZED |
| GL | GLASS/GLAZING |
| GND | GROUND |
| GWB | GYPSTUM WALL BOARD |
| HC | HOLLOW CORE/HANDICAP ACCESSIBLE |
| HDW | HARDWARE |
| HM | HOLLOW METAL |
| HMA | HOT-MIX-ASPHALT |

| ABBREVIATIONS CONT. | |
|---------------------|--|
| HP | HIGH POINT |
| HTR | HEATER |
| I/ | INSIDE OF |
| IBO | INSTALLED BY OTHERS |
| ID | INSIDE DIAMETER |
| INCL | INCLUD(E)ING |
| INS | INSULATION |
| INT | INTERIOR |
| INV | INVERT |
| ISO | ISOLATION |
| JT | JOINT |
| LAM | LAMINATED |
| LLV | LONG LEG VERTICAL |
| LP | LOW POINT |
| LTG | LIGHTING |
| MAS | MASONRY |
| MAT | MATERIAL |
| MEMB | MEMBRANE |
| MFR | MANUFACTURER |
| MH | MANHOLE |
| MO | MASONRY OPENING |
| MR | MOISTURE RESISTANT |
| MTL | METAL |
| NIC | NOT IN CONTRACT |
| NOM | NOMINAL |
| NS | NEAR SIDE |
| NTS | NOT TO SCALE |
| O/ | OUTSIDE OF |
| OC | ON CENTER |
| OD | OUTSIDE DIAMETER |
| OH | OVERHEAD/OVERHANG |
| OPNG | OPENING |
| OPP | OPPOSITE |
| PC | PRECAST |
| PLC(S) | PLACE(S) |
| PL(S) | PLATE(S) |
| PLYWD | PLYWOOD |
| PEMB | PRE-ENGINEERED METAL BUILDING |
| PT | PRETENSIONED |
| PTD | PAINTED |
| PTN | PARTITION |
| PVMT | PAVEMENT |
| QT | QUARRY TILE |
| QTY | QUANTITY |
| REG | REGISTER |
| REINF | REINFORCING |
| REQD | REQUIRED |
| RM | ROOM |
| RO | ROUGH OPENING |
| RS | ROUGH SAWN |
| SCH | SCHEDULE |
| SECT | SECTION |
| SHT | SHEET |
| SL | STRUCTURE LINE |
| SP | SPACE |
| SPEC | SPECIFICATION(S) |
| SQ | SQUARE |
| SS | STAINLESS STEEL |
| STA | STATION |
| STD | STANDARD |
| STL | STEEL |
| STOR | STORAGE |
| STR | STRUCTURAL |
| SUSP | SUSPENDED |
| SW | SIDEWALK/SHEAR WALL |
| T&B | TOP AND BOTTOM |
| T&G | TONGUE AND GROOVE |
| TBD | TACKBOARD/TO BE DETERMINED |
| TD | TRENCH DRAIN |
| TOB/F/M/P/R/S/W | TOP OF BANK/FOOTER/MASONRY/PIPE/RAIL(ING)/STEEL/WALL |
| TOS | TOE OF SLOPE |
| TRT | TREATED |
| UNO | UNLESS NOTED OTHERWISE |
| VCB | VINYL COVER BASE |
| VCT | VINYL COMPOSTION TILE |
| VIF | VERIFY IN FIELD |
| VP | VENEER PLASTER |
| VWC | VINYL WALL COVERING |
| WC | WATER CLOSET |
| WD | WOOD |
| WDW | WINDOW |
| WPR | WATERPROOFING |
| WUB | WALL UTILITY BOX |
| WWF | WELDED WIRE FABRIC |

DRAWING INDEX

| Sheet Number | Sheet Name |
|--------------|-------------------------------|
| G000 | DRAWING INDEX SHEET |
| S000 | STRUCTURAL GENERAL NOTES |
| S111 | FLOOR FRAMING PLAN |
| S112 | ROOF FRAMING PLAN |
| S500 | STRUCTURAL SECTIONS & DETAILS |
| A120 | DIMENSIONED ROOF PLAN |
| A200 | BUILDING ELEVATIONS |
| A201 | BUILDING ELEVATIONS |
| A202 | BUILDING ELEVATIONS |
| A203 | BUILDING ELEVATIONS |
| A501 | DETAIL DRAWINGS |

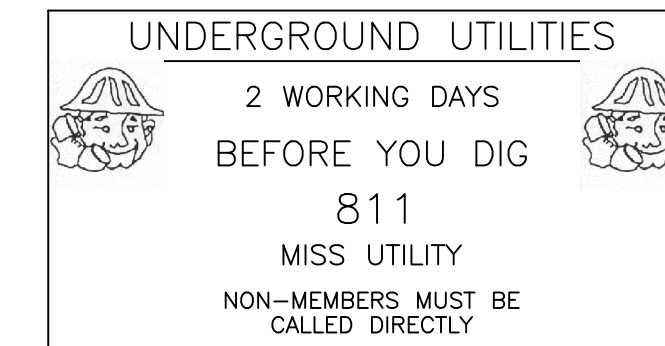
| SYMBOL LEGEND | | MATERIAL LEGEND | |
|---------------|-------------------|-----------------|-----------------------------|
| | CODED NOTE | | FIBER-REINFORCED CONCRETE |
| | REVISION TRIANGLE | | CONCRETE |
| | SECTION | | CONCRETE MASONRY OR VCT |
| | ELEVATION | | BRICK OR HMA |
| | ELEVATION | | CARPET |
| | ELEVATION | | WELL-GRADED STONE/GRAVEL |
| | ELEVATION | | UNIFORM-GRADED STONE/GRAVEL |
| | ELEVATION | | WOOD |
| | ELEVATION | | WOOD |
| | ELEVATION | | RIGID INSULATION |
| | ELEVATION | | BATT INSULATION |
| | ELEVATION | | STEEL |
| | ELEVATION | | SOIL |
| | ELEVATION | | BEDROCK OR HARDWOOD FLOOR |
| | ELEVATION | | SAND, HMA, OR GYPSUM |
| | ELEVATION | | CERAMIC TILE |
| | ELEVATION | | WOOD SHEATHING |
| | ELEVATION | | CEILING GRID |
| | ELEVATION | | GLAZED CLAY TILE |
| | ELEVATION | | UNGLAZED CLAY TILE |

UTILITIES

PARKERSBURG UTILITY BOARD 304-424-8550
 MONPOWER 800-686-0022
 FRONTIER COMMUNICATIONS 304-424-9437
 SUDDENLINK COMMUNICATIONS 844-874-7558
 DOMINION HOPE GAS 304-464-4029
 CAS CABLE 304-420-2470

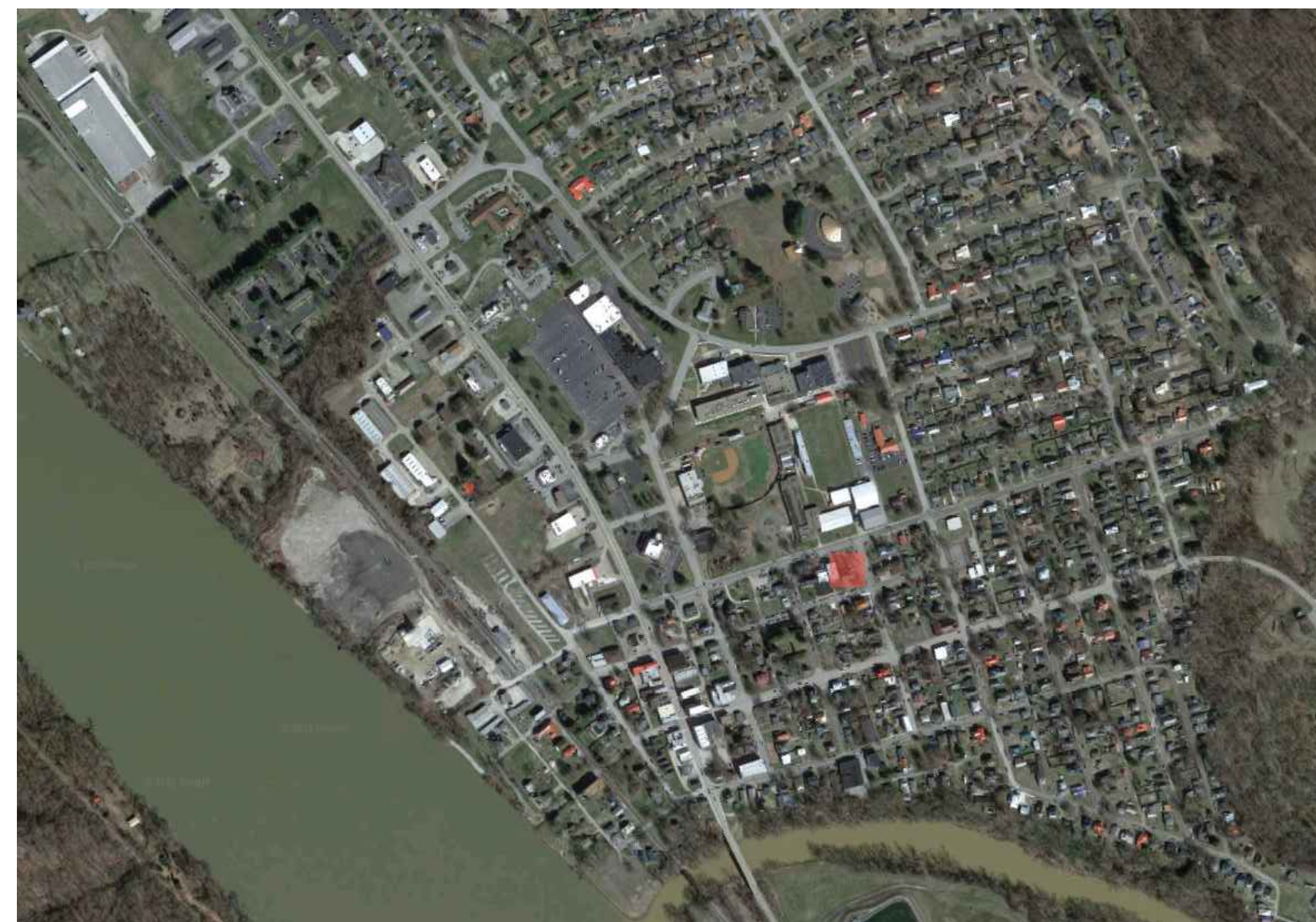
CITY AUTHORITY CONTACTS

CITY OF PARKERSBURG CODE ADMINISTRATION 304-424-8594
 FIRE DEPARTMENT BUREAU OF FIRE PREVENTION 304-424-8552
 ENGINEERING DEPT 304-424-8568
 WOOD CO. PLANNING COMMISSION 304-424-1976
 BUILDING PERMIT OFFICE 304-424-1988
 WV STATE FIRE MARSHAL'S OFFICE 304-558-2191
 WDEP 304-926-0440
 WVDNR 304-420-4550
 WV PUBLIC LAND CORPORATION 304-558-3062
 WVDHHR BUREAU OF PUBLIC HEALTH 304-558-2971
 WVDHHR OHFLAC 304-558-0050



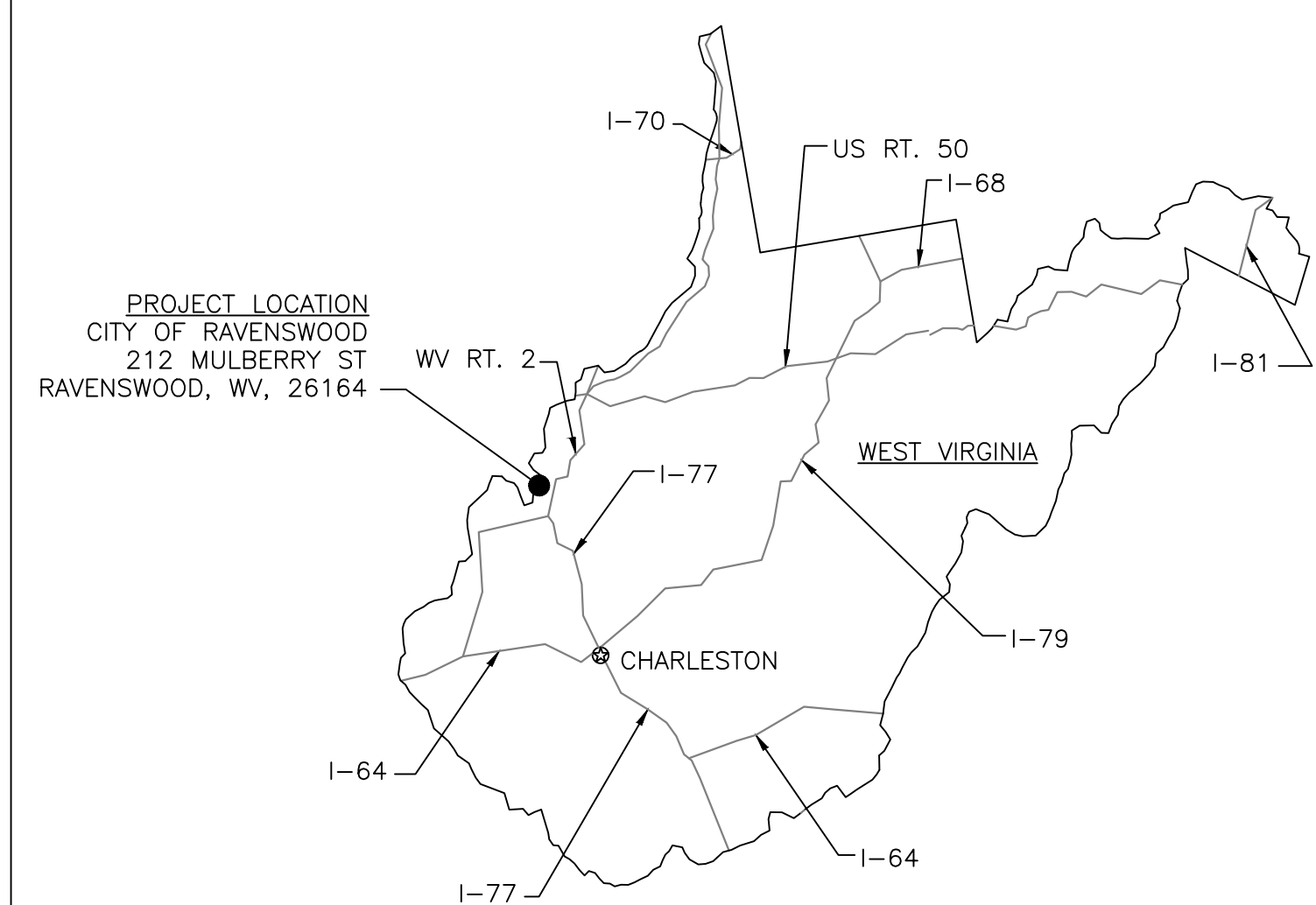
CONTRACTOR SHALL BE RESPONSIBLE FOR COMPLETE IDENTIFICATION AND COORDINATION OF EXISTING UTILITIES WITH OWNER AND THE RESPECTIVE UTILITY PROVIDER IF APPLICABLE.

SITE LOCATION PLAN



PLAN NORTH

VICINITY PLAN



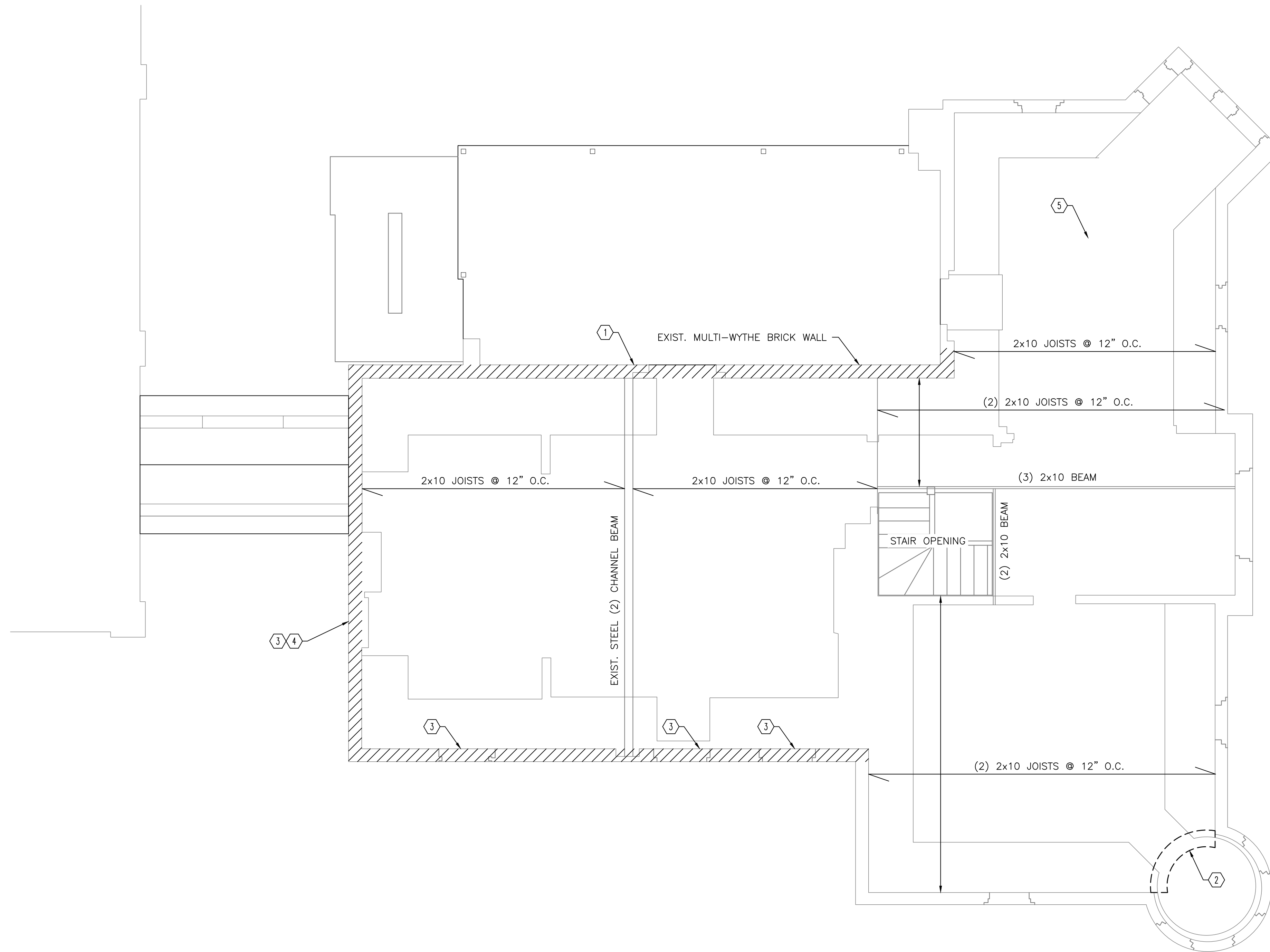
| Rev. | By | Date | Description |
|------|-----|----------|---------------------------------|
| A | SGS | 11/16/21 | ISSUED FOR PERMITS/CONSTRUCTION |

Drawing Description
 CITY OF RAVENSWOOD
 212 MULBERRY STREET RAVENSWOOD, WV
 MCINTOSH HOUSE ROOF DESIGN
 SHEET INDEX



| | |
|--------------|-----------|
| Project: | 2211052.2 |
| Designed By: | CPM |
| Drawn By: | CPM |
| Checked By: | SGS |
| Scale: | - |
| Plot Date: | - |
| Revision: | - |

Drawing Number:
G000



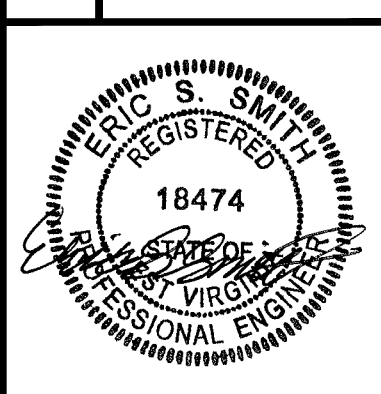
FLOOR FRAMING PLAN
SCALE: 1/4" = 1'-0"

- NOTES:
A. CONTRACTOR TO FIELD VERIFY EXISTING CONDITIONS IN FIELD PRIOR TO CONSTRUCTION.
- CODED NOTES:
1. DEMOLISH AND REMOVE TOP SIX (6) COURSES OF DAMAGED MASONRY AT HATCHED AREAS. REPLACE MASONRY IN KIND UP TO SILL PLATE LEVEL. REPLACE P.T. WOOD HOLDOWN AND SOLE PLATE LIKE IN KIND.
2. REPLACE ALL WALL/ROOF FRAMING MEMBERS AND VERTICAL SHEETING/FRAMING DAMAGED IN THIS AREA LIKE IN KIND.
3. REPLACE DAMAGED WOOD HEADER WITH PRECAST CONCRETE LINTEL AND STONE HEADER LIKE IN KIND.
4. REPLACE DAMAGE STONE SILL LIKE IN KIND.
5. UNDAMAGED, UNCHARRED FLOOR JOISTS IN THIS AREA TO REMAIN. CONTRACTOR TO FIELD VERIFY EXISTING CONDITIONS.



| Rev. | Description | By | Date |
|------|---------------------------------|-----|----------|
| A | ISSUED FOR PERMITS/CONSTRUCTION | ESS | 11/12/21 |

Drawing Description
CITY OF RAVENSWOOD
212 MULBERRY STREET RAVENSWOOD, WV
MCINTOSH HOUSE RENOVATION
FLOOR FRAMING PLAN

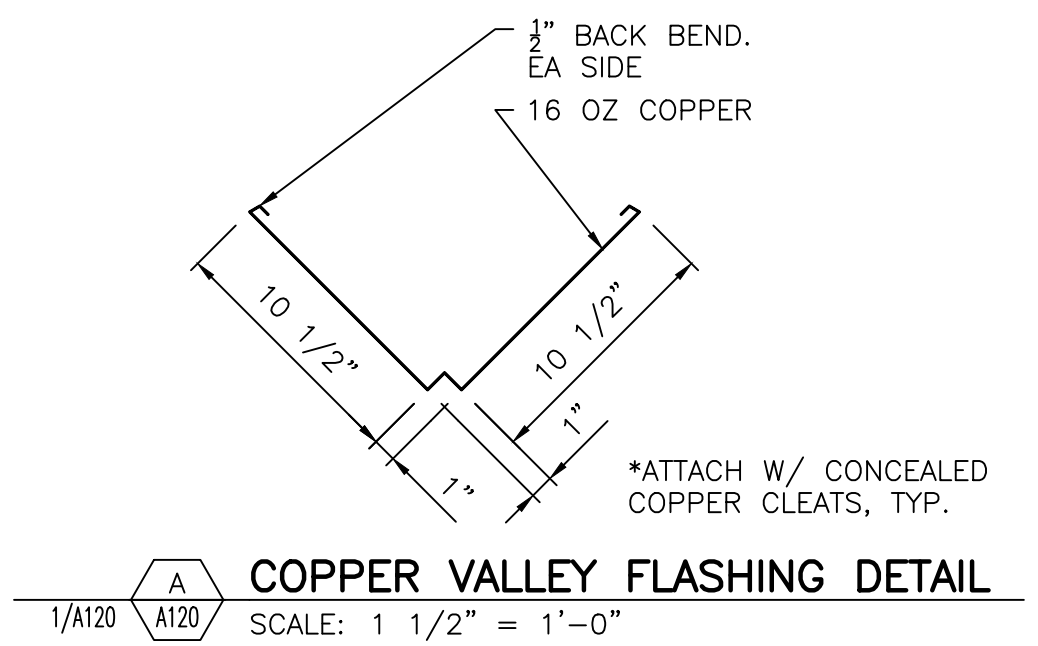


| | |
|--------------|----------|
| Project: | 2211052 |
| Designed By: | STC |
| Drawn By: | STC |
| Checked By: | ESS |
| Scale: | AS NOTED |
| Plot Date: | 11/12/21 |
| Revision: | A |

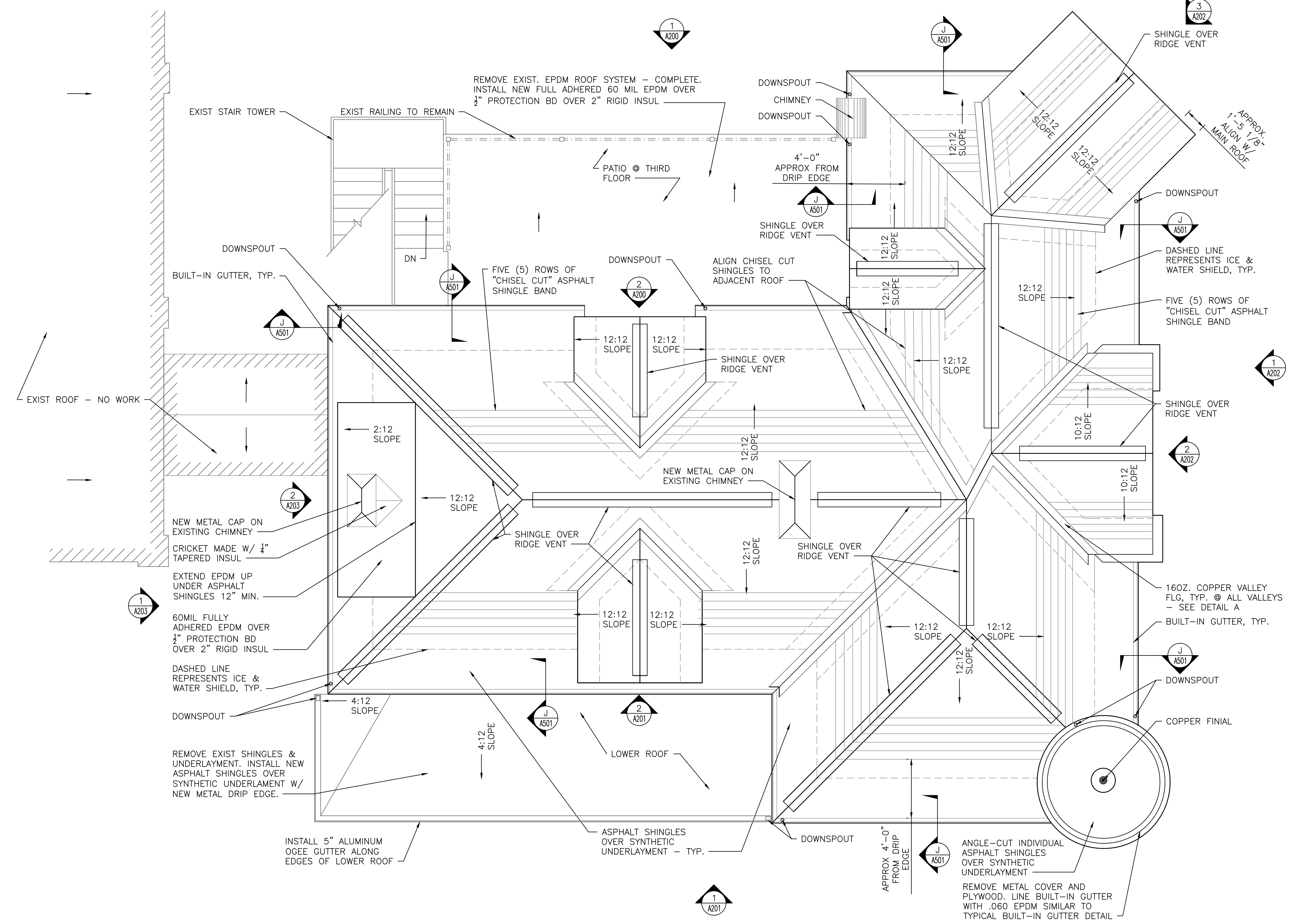
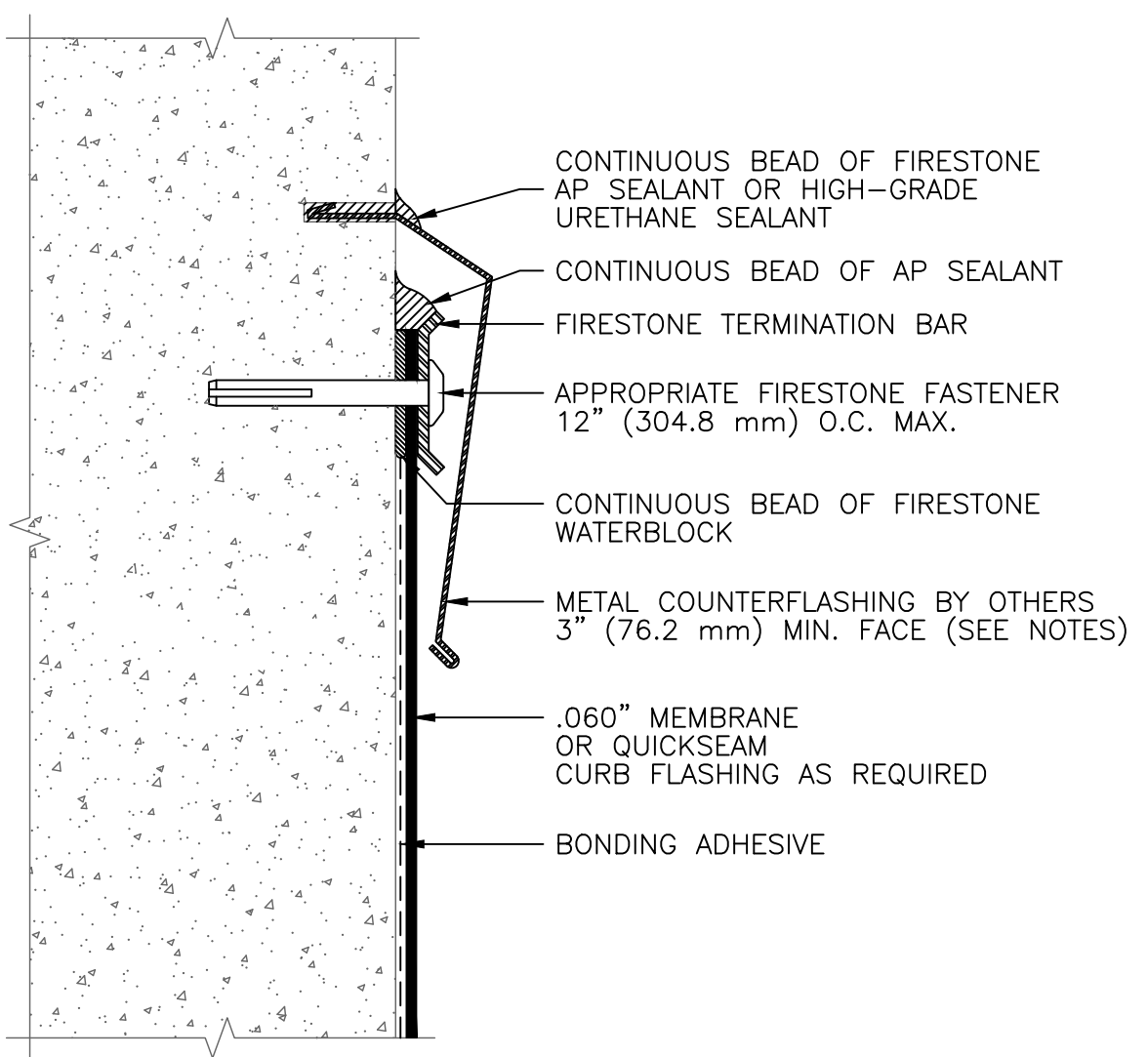
Drawing Number:
S111

- GENERAL NOTES:**
- CONTRACTOR TO REMOVE AND REPLACE ALL BURNT/CHARRED WOOD.
 - CONTRACTOR SHALL REMOVE ALL WOOD FRAMING DOWN TO THE TOP OF MASONRY, EXCEPT IN THE TURRET. SEE SPECIFIC NOTES ON THE TURRET ON THE DRAWINGS.
 - ALL DETAILS AND MEASUREMENTS ARE BASED ON LIMITED ACCESS TO ACTUAL TRIM, DORMERS, ETC. CONTRACTOR SHALL FIELD MEASURE AND VERIFY EXACT PROFILE OF ALL TRIM AND MOLDINGS.
 - CONTRACTOR SHALL REMOVE REMAINING SECTIONS OF DORMERS AND TRIM SHOWN TO BE REMOVED AND PLACE ON THE SITE SO THAT MOLDINGS AND DETAILS CAN BE MEASURED EXACTLY.
 - PREPARE AND PAINT ALL NEW AND RESTORED WOODWORK INCLUDING: FRIEZE, FASCIA, SOFFITS, CEDAR SINGLES, WINDOWS, AND METAL TRIM ASSOCIATED WITH BUILT-IN GUTTERS.

- GENERAL NOTES:**
- INSTALL 3" WIDE SELF ADHERING ICE & WATER SHIELD ALONG ALL ROOF EDGES & VALLEYS.
 - ALL BUILT-IN GUTTERS TO HAVE 1/16" TAPERED RIGID INSULATION STARTING AT DOWNSPOUT AND EXTENDING TO MID POINT TO NEXT DOWNSPOUT. LINE BUILT-IN GUTTER WITH .060 EPDM AND EXTEND UP UNDER SHINGLES 12".



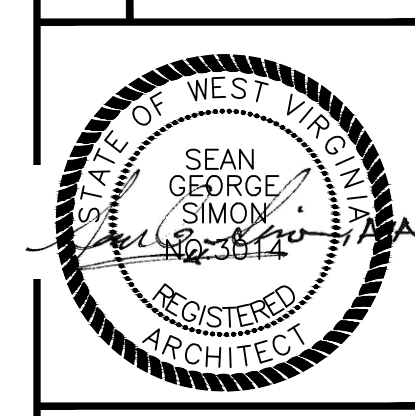
- NOTES:**
- REFER TO FIRESTONE WEBSITE FOR MOST CURRENT INFORMATION.
 - WATER BLOCK APPLIED AT THE RATE OF 10 LINEAR FEET PER TUBE.
 - REGULAR MAINTENANCE OF COUNTERFLASHING AND SEALANTS REQUIRED. NOT INCLUDED AS PART OF THE FIRESTONE WARRANTY.
 - METAL COUNTERFLASHING SHALL BE 24 GAUGE PRE-FINISHED STEEL OR .032" MIN. ALUMINUM FORMED WITH HEMMED LOWER EDGE.
 - INSTALL FIRESTONE TERMINATION BAR WITH 1/4" (6.4 mm) GAP BETWEEN ADJOINING SECTIONS.
 - TERMINATION BAR MUST BE CUT AT INSIDE AND OUTSIDE CORNERS. **DO NOT BEND AROUND CORNERS.**
 - TERMINATION BAR MUST BE FASTENED WITHIN 1" (25.4 mm) MAX. OF ALL SECTION ENDS.
 - INSTALL METAL WORK IN ACCORDANCE WITH CURRENT SMACNA RECOMMENDATIONS.



ROOF PLAN
 SCALE: 1/4" = 1'-0"

| Rev. | Description | By | Date |
|------|---------------------------------|-----|----------|
| A | ISSUED FOR PERMITS/CONSTRUCTION | SGS | 11/16/21 |

| Drawing Description |
|--|
| CITY OF RAVENSWOOD 212 MULBERRY STREET RAVENSWOOD, WV MCINTOSH HOUSE RENOVATION ROOF PLAN |



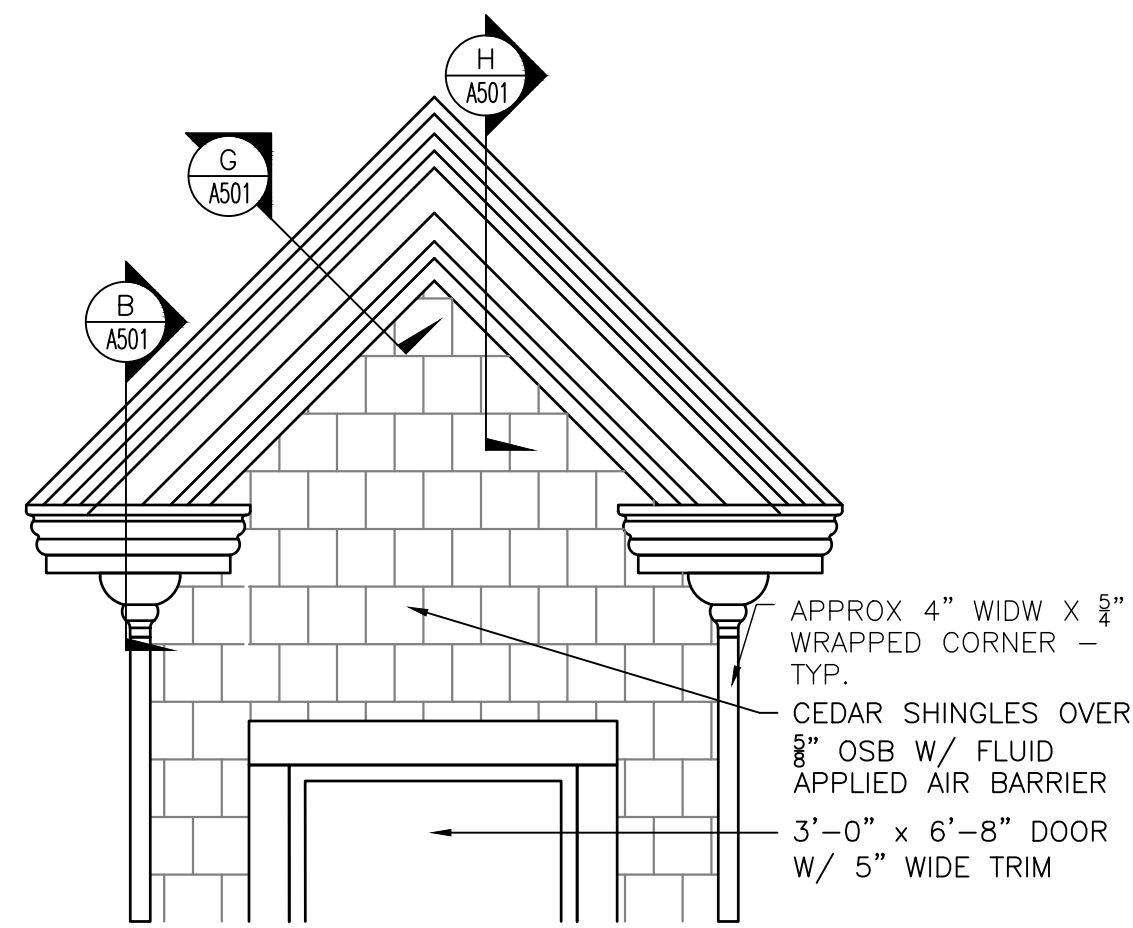
| | |
|-----------------|---------|
| Project: | 2211052 |
| Designed By: | CPM |
| Drawn By: | CPM |
| Checked By: | SGS |
| Scale: | - |
| Plot Date: | - |
| Revision: | - |
| Drawing Number: | A120 |

GENERAL NOTES:

1. CONTRACTOR TO REMOVE AND REPLACE ALL BURNT/CHARRED WOOD.
2. CONTRACTOR SHALL REMOVE ALL WOOD FRAMING DOWN TO THE TOP OF MASONRY, EXCEPT IN THE TURRET. SEE SPECIFIC NOTES ON THE TURRET ON THE DRAWINGS.
3. ALL DETAILS AND MEASUREMENTS ARE BASED ON LIMITED ACCESS TO ACTUAL TRIM, DORMERS, ETC. CONTRACTOR SHALL FIELD MEASURE AND VERIFY EXACT PROFILE OF ALL TRIM AND MOLDINGS.
4. CONTRACTOR SHALL REMOVE REMAINING SECTIONS OF DORMERS AND TRIM SHOWN TO BE REMOVED AND PLACE ON THE SITE SO THAT MOLDINGS AND DETAILS CAN BE MEASURED EXACTLY.
5. PREPARE AND PAINT ALL NEW AND RESTORED WOODWORK INCLUDING: FRIEZE, FASCIA, SOFFITS, CEDAR SINGLES, WINDOWS, AND METAL TRIM ASSOCIATED WITH BUILT-IN GUTTERS.

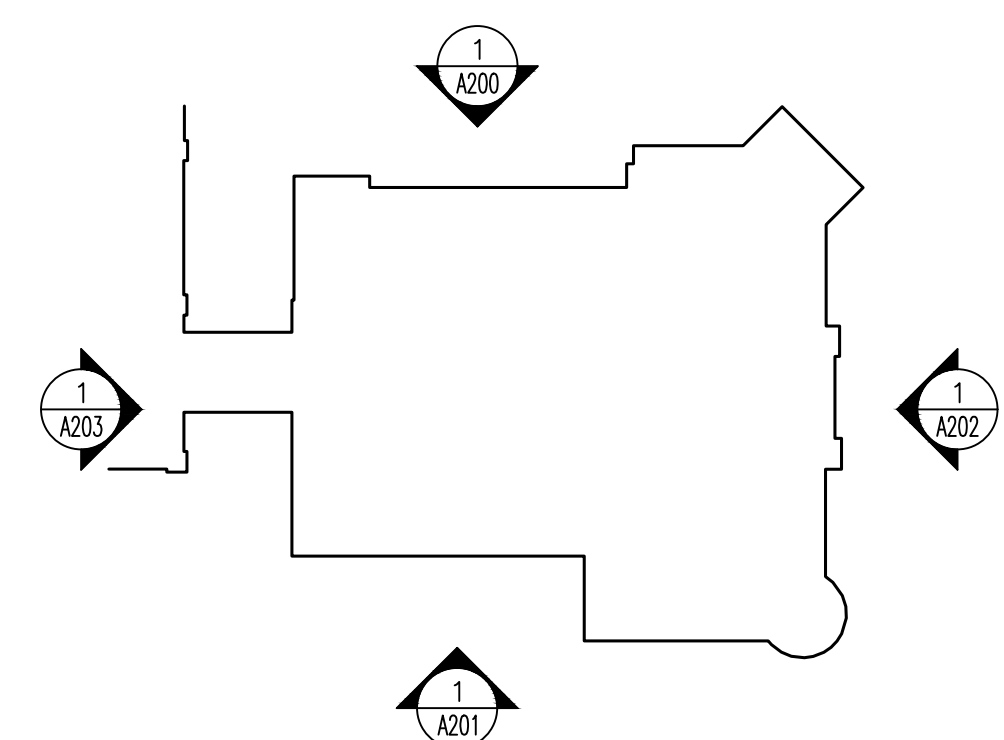


| | | | |
|------|-----|-------------|---------------------------------|
| By | SGS | Date | 11/16/21 |
| Rev. | A | Description | ISSUED FOR PERMITS/CONSTRUCTION |



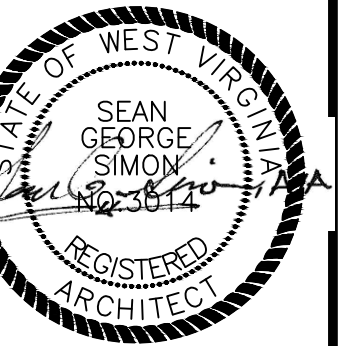
2 NORTH DORMER ELEVATION
A200 SCALE: 1/2" = 1'-0"

1 NORTH ELEVATION
A120 SCALE: 1/8" = 1'-0"



KEY PLAN
SCALE: NTS

Drawing Description
CITY OF RAVENSWOOD
212 MULBERRY STREET RAVENSWOOD, WV
MCINTOSH HOUSE RENOVATION
ELEVATION



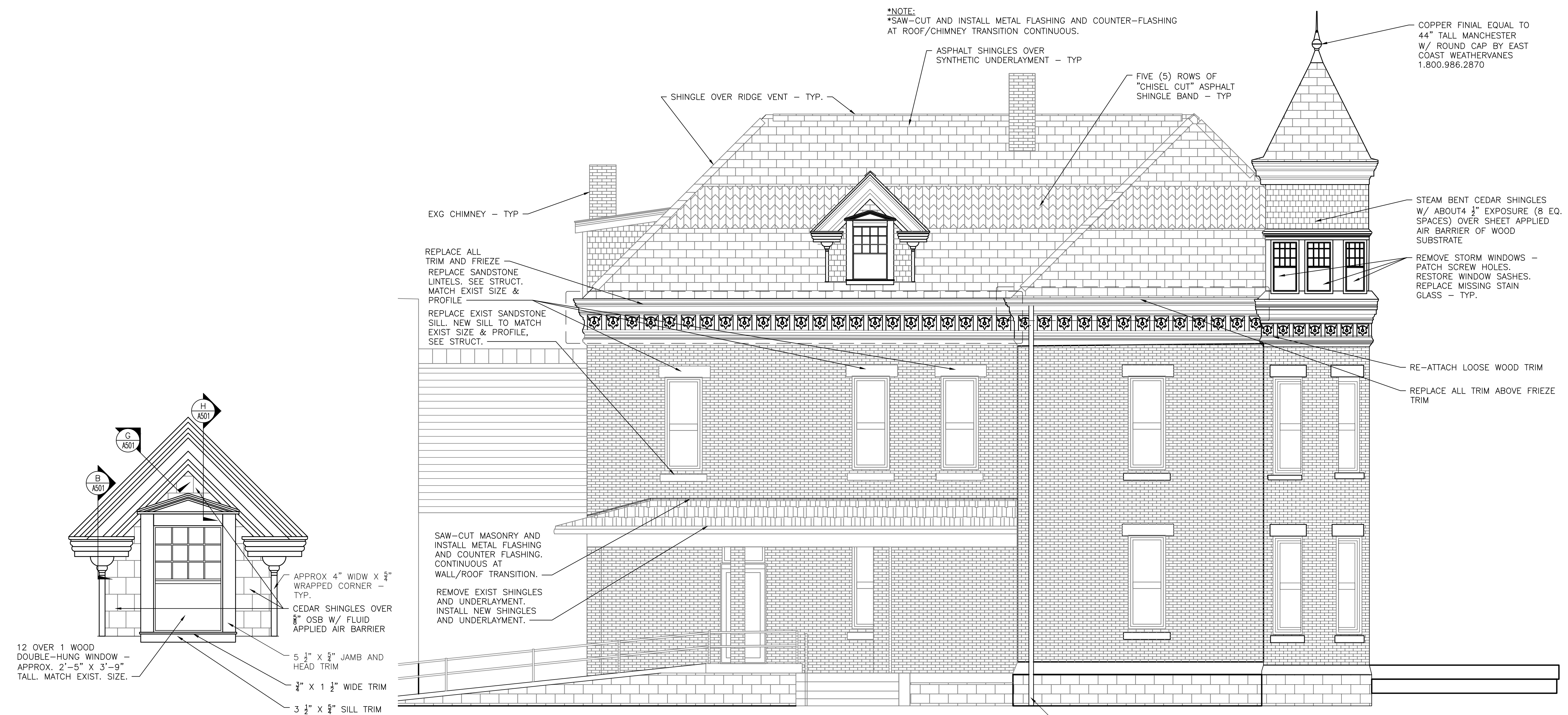
| | |
|--------------|---------|
| Project: | 2211052 |
| Designed By: | CPM |
| Drawn By: | CPM |
| Checked By: | SGS |
| Scale: | - |
| Plot Date: | - |
| Revision: | - |

Drawing Number:
A200

GENERAL NOTES:

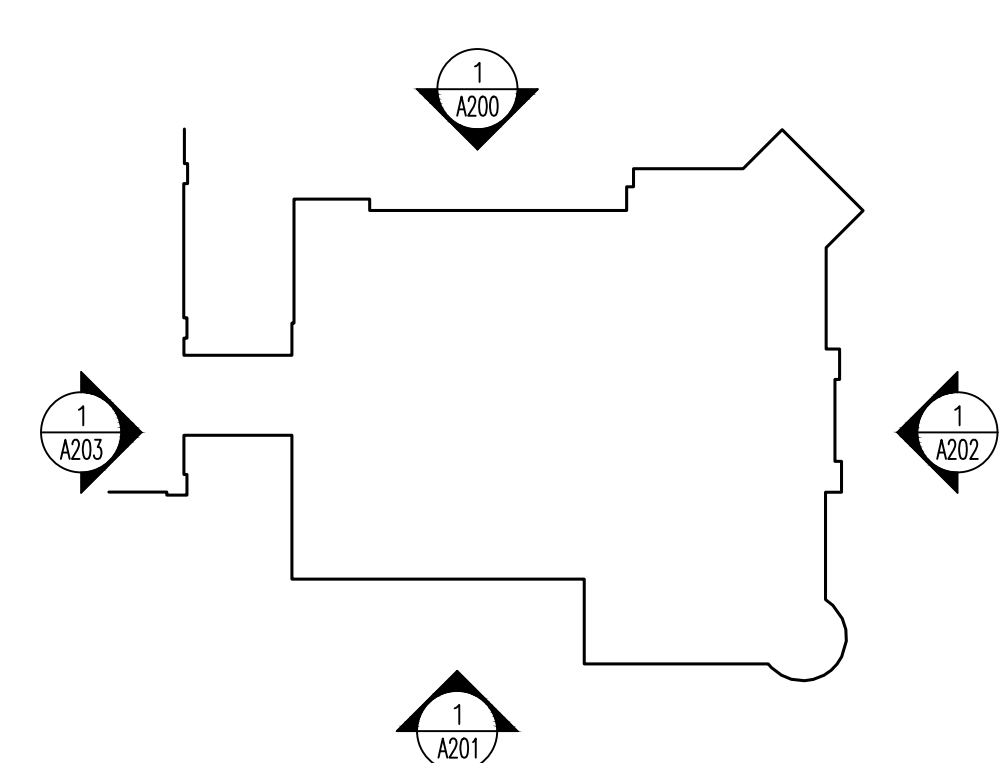
1. CONTRACTOR TO REMOVE AND REPLACE ALL BURNT/CHARRED WOOD.
2. CONTRACTOR SHALL REMOVE ALL WOOD FRAMING DOWN TO THE TOP OF MASONRY, EXCEPT IN THE TURRET. SEE SPECIFIC NOTES ON THE TURRET ON THE DRAWINGS.
3. ALL DETAILS AND MEASUREMENTS ARE BASED ON LIMITED ACCESS TO ACTUAL TRIM, DORMERS, ETC. CONTRACTOR SHALL FIELD MEASURE AND VERIFY EXACT PROFILE OF ALL TRIM AND MOLDINGS.
4. CONTRACTOR SHALL REMOVE REMAINING SECTIONS OF DORMERS AND TRIM SHOWN TO BE REMOVED AND PLACE ON THE SITE SO THAT MOLDINGS AND DETAILS CAN BE MEASURED EXACTLY.
5. PREPARE AND PAINT ALL NEW AND RESTORED WOODWORK INCLUDING: FRIEZE, FASCIA, SOFFITS, CEDAR SINGLES, WINDOWS, AND METAL TRIM ASSOCIATED WITH BUILT-IN GUTTERS.

| Rev. | By | Date | Description |
|------|-----|----------|---------------------------------|
| A | SGS | 11/16/21 | ISSUED FOR PERMITS/CONSTRUCTION |



2 SOUTH DORMER ELEVATION
 A120 A201 SCALE: 1/2" = 1'-0"

1 SOUTH ELEVATION
 A120 A201 SCALE: 1/4" = 1'-0"



Drawing Description
 CITY OF RAVENSWOOD
 212 MULBERRY STREET RAVENSWOOD, WV
 MCINTOSH HOUSE RENOVATION
 ELEVATION

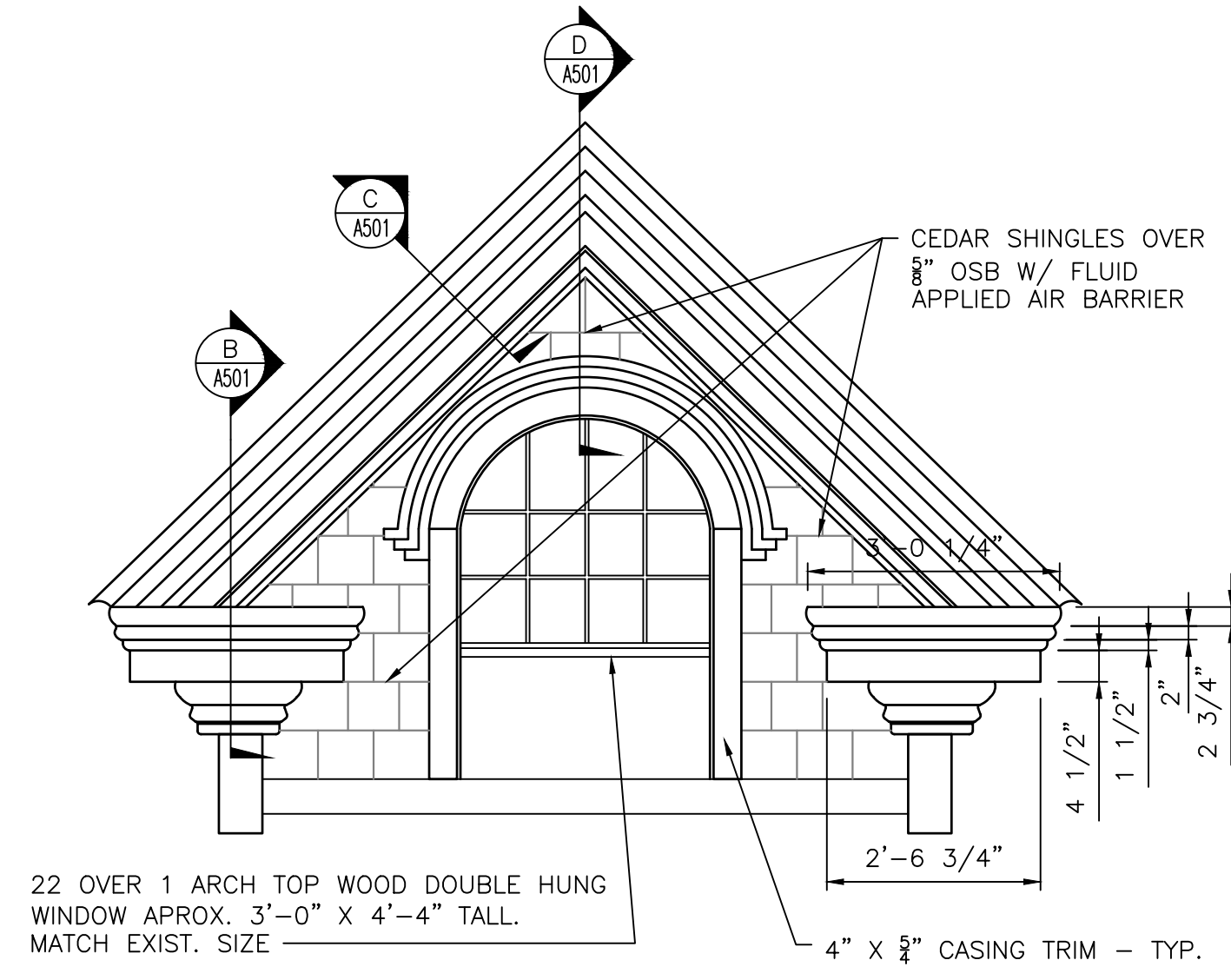


| | |
|--------------|---------|
| Project: | 2211052 |
| Designed By: | CPM |
| Drawn By: | CPM |
| Checked By: | SGS |
| Scale: | - |
| Plot Date: | - |
| Revision: | - |

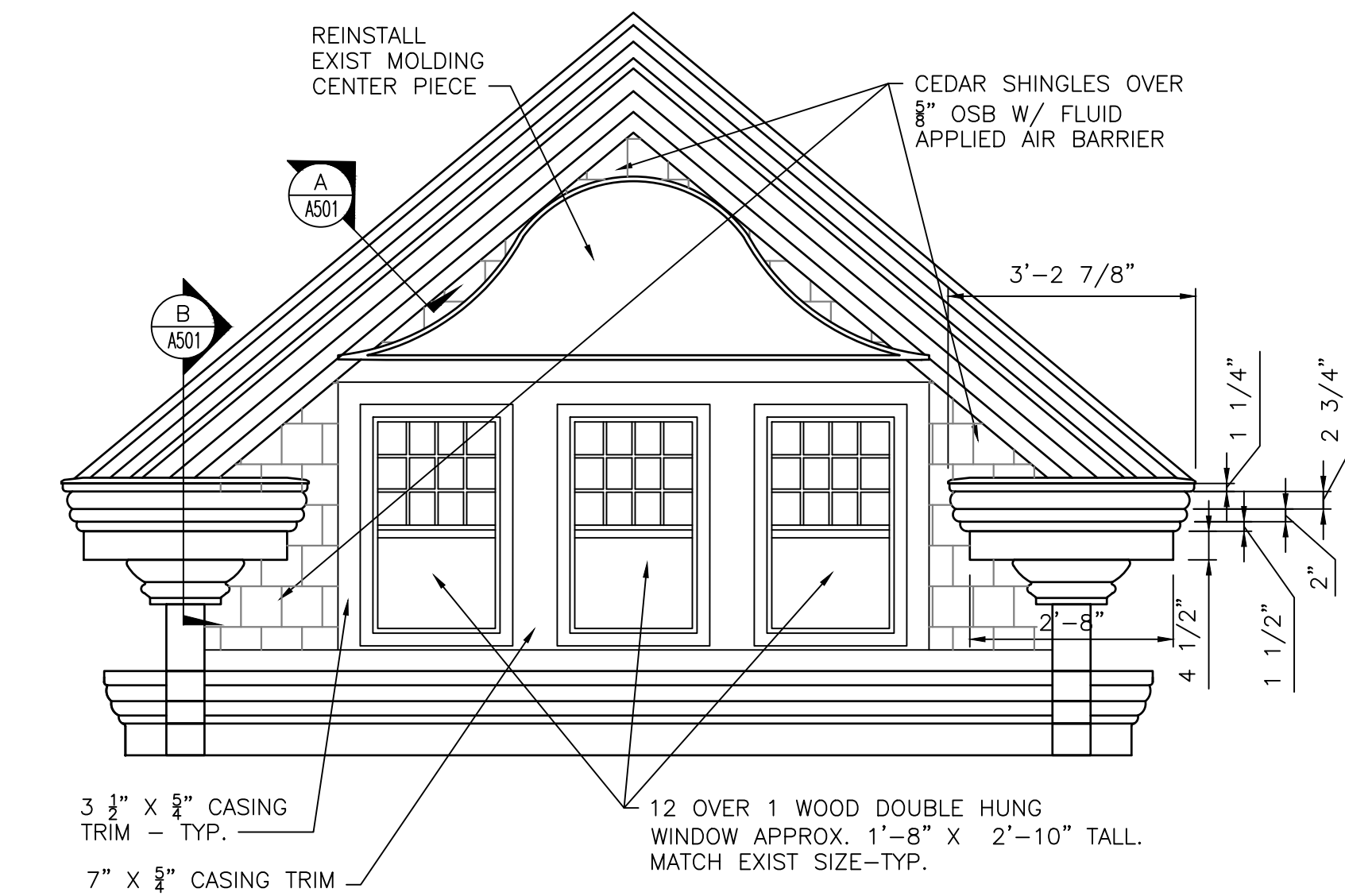
Drawing Number:
A201

GENERAL NOTES:

1. CONTRACTOR TO REMOVE AND REPLACE ALL BURNT/CHARRED WOOD.
2. CONTRACTOR SHALL REMOVE ALL WOOD FRAMING DOWN TO THE TOP OF MASONRY, EXCEPT IN THE TURRET. SEE SPECIFIC NOTES ON THE TURRET ON THE DRAWINGS.
3. ALL DETAILS AND MEASUREMENTS ARE BASED ON LIMITED ACCESS TO ACTUAL TRIM, DORMERS, ETC. CONTRACTOR SHALL FIELD MEASURE AND VERIFY EXACT PROFILE OF ALL TRIM AND MOLDINGS.
4. CONTRACTOR SHALL REMOVE REMAINING SECTIONS OF DORMERS AND TRIM SHOWN TO BE REMOVED AND PLACE ON THE SITE SO THAT MOLDINGS AND DETAILS CAN BE MEASURED EXACTLY.
5. PREPARE AND PAINT ALL NEW AND RESTORED WOODWORK INCLUDING: FRIEZE, FASCIA, SOFFITS, CEDAR SINGLES, WINDOWS, AND METAL TRIM ASSOCIATED WITH BUILT-IN GUTTERS.



3 NE DORMER ELEVATION
 A120 SCALE: 1/2" = 1'-0"



2 EAST DORMER ELEVATION
 A120 SCALE: 1 1/2" = 1'-0"

COPPER FINIAL EQUAL TO 44" TALL MANCHESTER W/ ROUND CAP BY EAST COAST WEATHERVANES 1.800.986.2870

ANGLE-CUT INDIVIDUAL ASPHALT SHINGLES OVER SYNTHETIC UNDERLAYMENT

REMOVE METAL COVER AND PLYWOOD. LINE BUILT-IN GUTTER WITH .060 EPDM SIMILAR TO TYPICAL BUILT-IN GUTTER DETAIL

STEAM BENT CEDAR SHINGLES W/ ABOUT 4 1/2" EXPOSURE (8 EQ. SPACES) OVER SHEET APPLIED AIR BARRIER OF WOOD SUBSTRATE

REMOVE STORM WINDOWS - PATCH SCREW HOLES. RESTORE WINDOW SASHES. REPLACE MISSING STAIN GLASS - TYP.



1 EAST ELEVATION
 A120 SCALE: 1/8" = 1'-0"

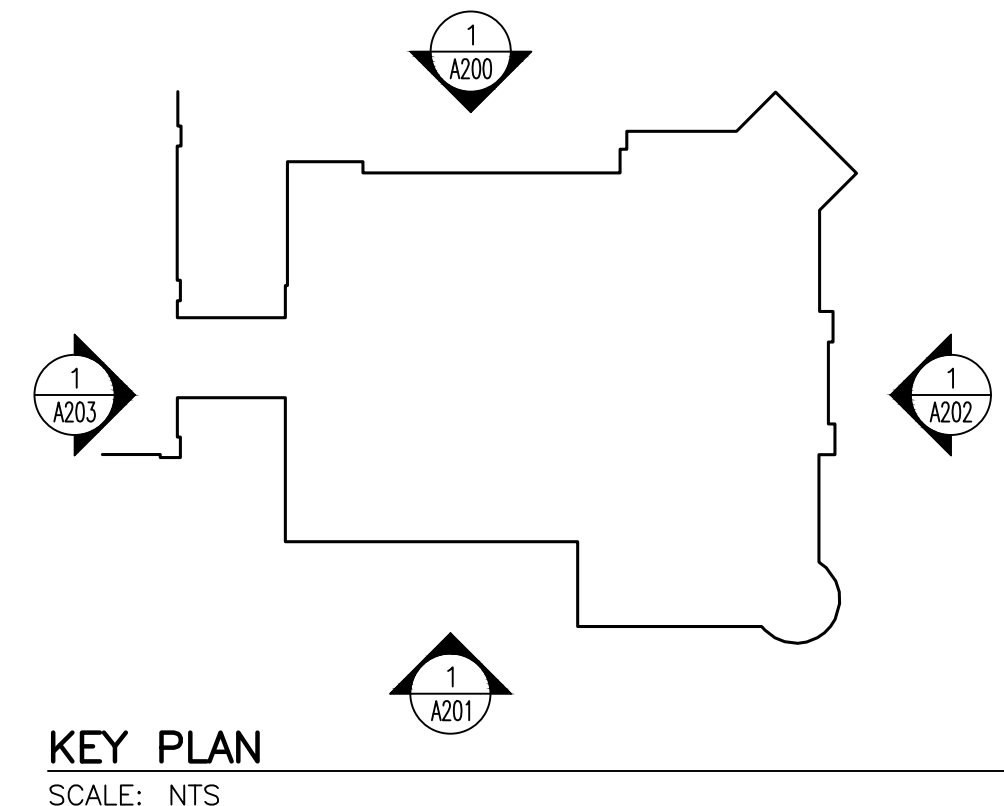
| Rev. | Description | By | Date |
|------|---------------------------------|-----|----------|
| A | ISSUED FOR PERMITS/CONSTRUCTION | SGS | 11/16/21 |

Drawing Description
 CITY OF RAVENSWOOD
 212 MULBERRY STREET RAVENSWOOD, WV
 MCINTOSH HOUSE RENOVATION
 ELEVATION



| | |
|--------------|---------|
| Project: | 2211052 |
| Designed By: | CPM |
| Drawn By: | CPM |
| Checked By: | SGS |
| Scale: | - |
| Plot Date: | - |
| Revision: | - |

Drawing Number:
A202



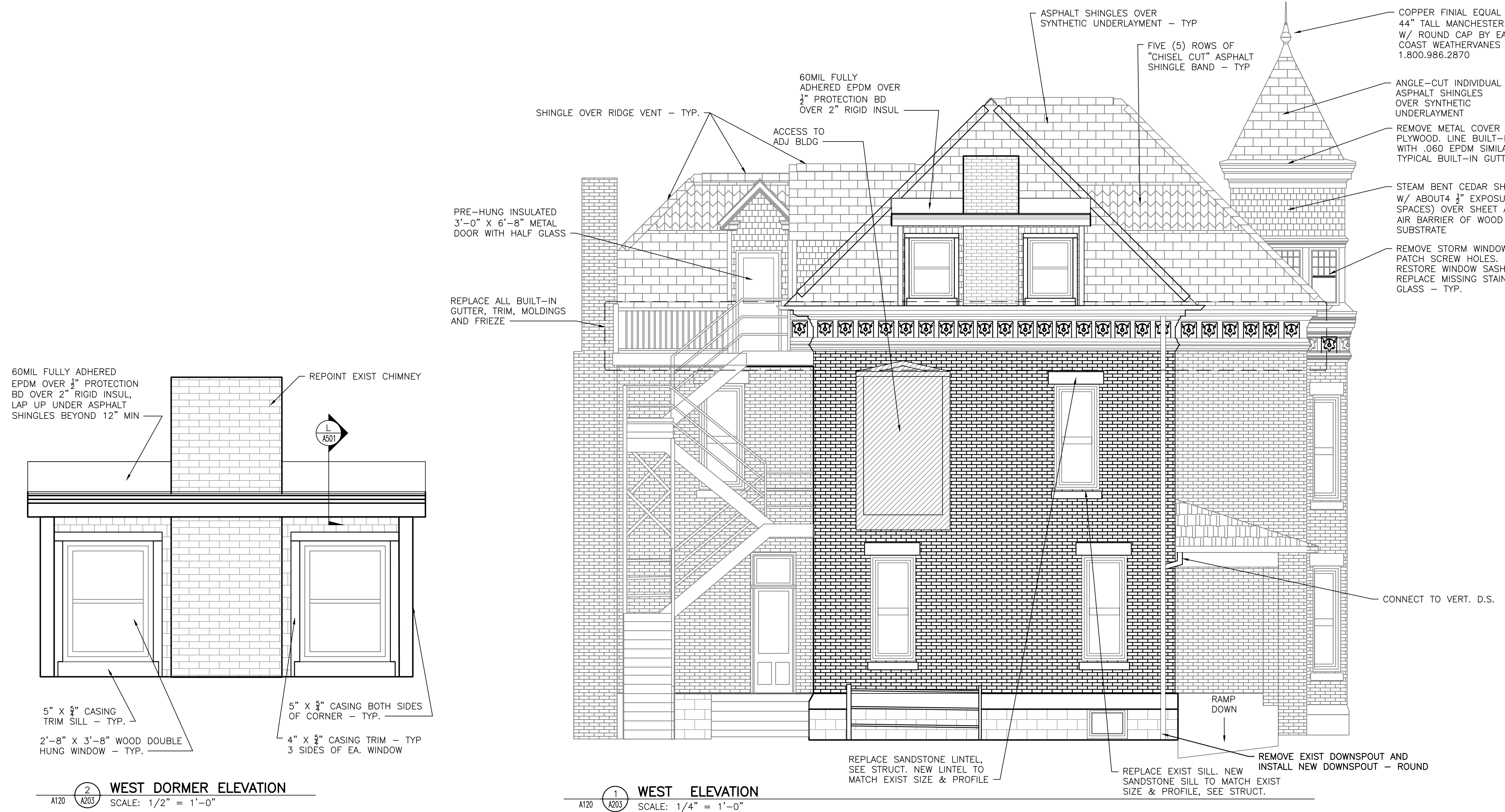
KEY PLAN
 SCALE: NTS

GENERAL NOTES:

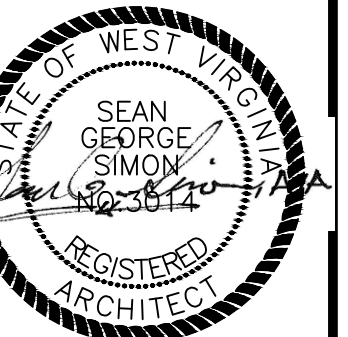
1. CONTRACTOR TO REMOVE AND REPLACE ALL BURNT/CHARRED WOOD.
2. CONTRACTOR SHALL REMOVE ALL WOOD FRAMING DOWN TO THE TOP OF MASONRY, EXCEPT IN THE TURRET. SEE SPECIFIC NOTES ON THE TURRET ON THE DRAWINGS.
3. ALL DETAILS AND MEASUREMENTS ARE BASED ON LIMITED ACCESS TO ACTUAL TRIM, DORMERS, ETC. CONTRACTOR SHALL FIELD MEASURE AND VERIFY EXACT PROFILE OF ALL TRIM AND MOLDINGS.
4. CONTRACTOR SHALL REMOVE REMAINING SECTIONS OF DORMERS AND TRIM SHOWN TO BE REMOVED AND PLACE ON THE SITE SO THAT MOLDINGS AND DETAILS CAN BE MEASURED EXACTLY.
5. PREPARE AND PAINT ALL NEW AND RESTORED WOODWORK INCLUDING: FRIEZE, FASCIA, SOFFITS, CEDAR SINGLES, WINDOWS, AND METAL TRIM ASSOCIATED WITH BUILT-IN GUTTERS.



| Rev. | Description | By | Date |
|------|---------------------------------|-----|----------|
| A | ISSUED FOR PERMITS/CONSTRUCTION | SGS | 11/16/21 |



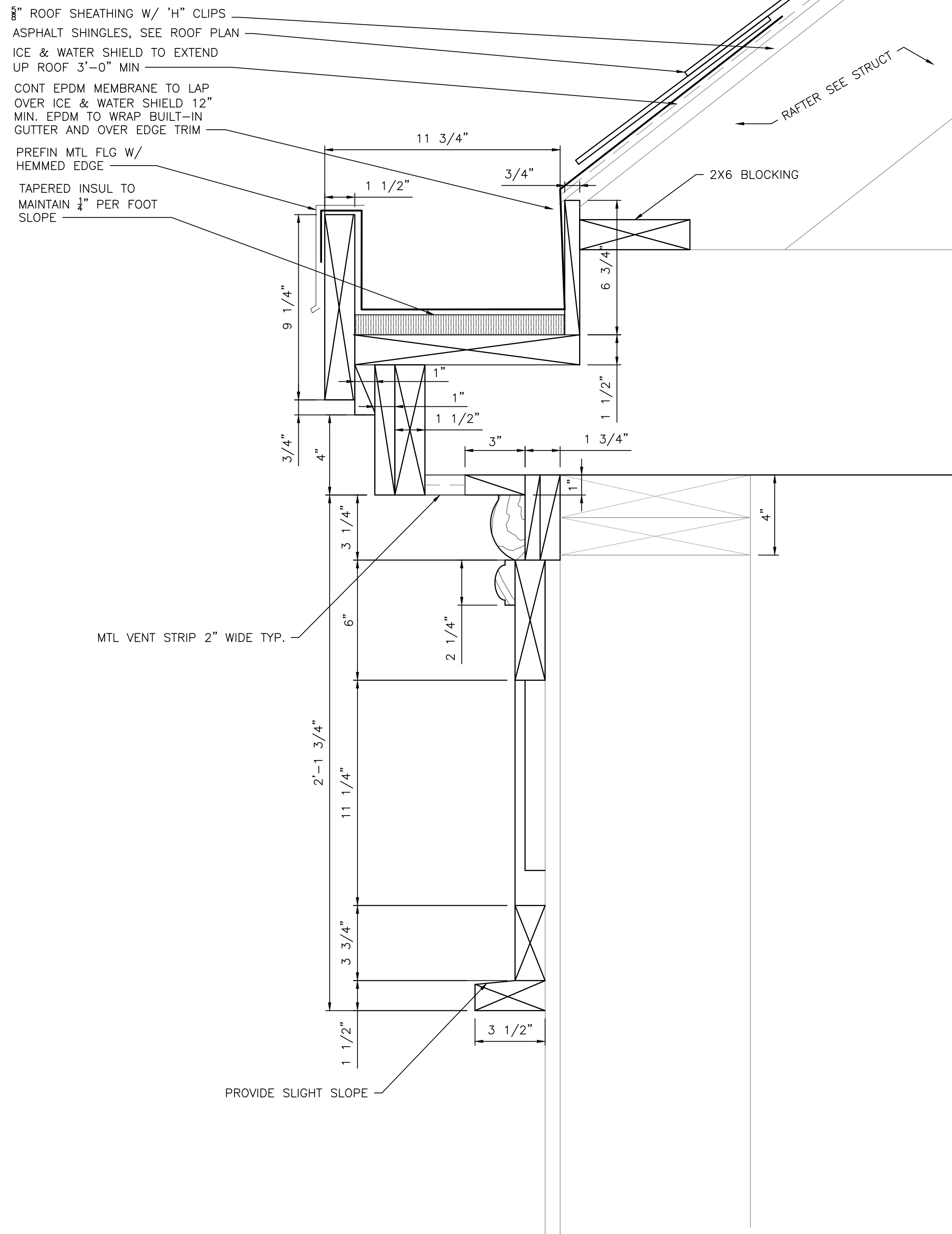
Drawing Description
 CITY OF RAVENSWOOD
 212 MULBERRY STREET RAVENSWOOD, WV
 MCINTOSH HOUSE RENOVATION
 ELEVATION



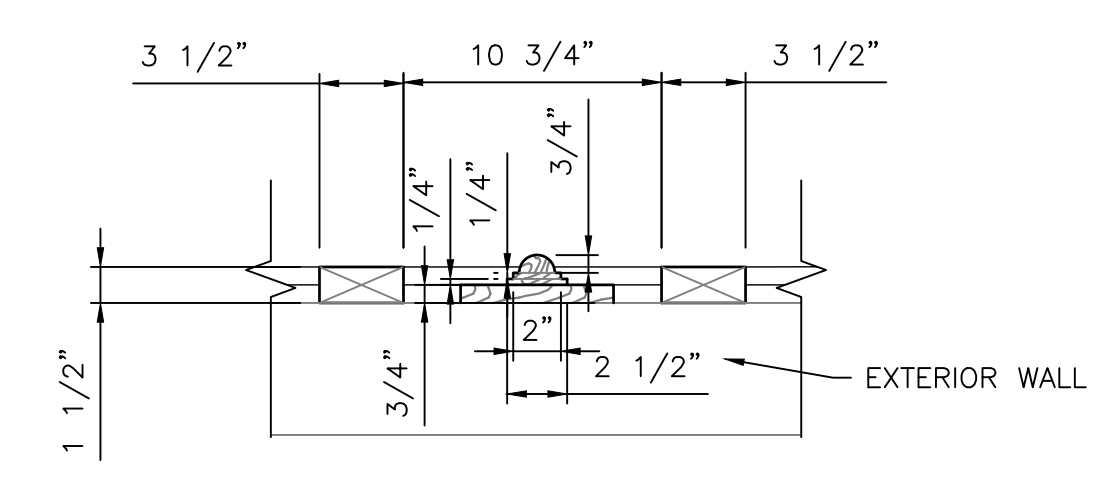
| | |
|--------------|---------|
| Project: | 2211052 |
| Designed By: | CPM |
| Drawn By: | CPM |
| Checked By: | SGS |
| Scale: | - |
| Plot Date: | - |
| Revision: | - |

Drawing Number:
A203

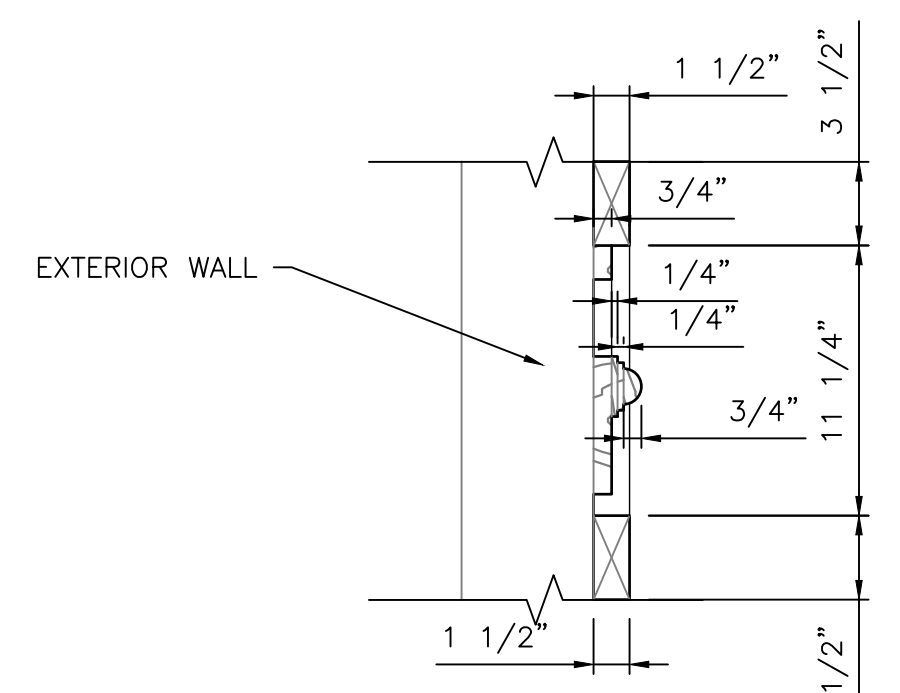
*NOTE:
 *ALL WOOD TRIM TO BE POPLAR AND PAINTED ON ALL SIDES INCLUDING CUT EDGES.



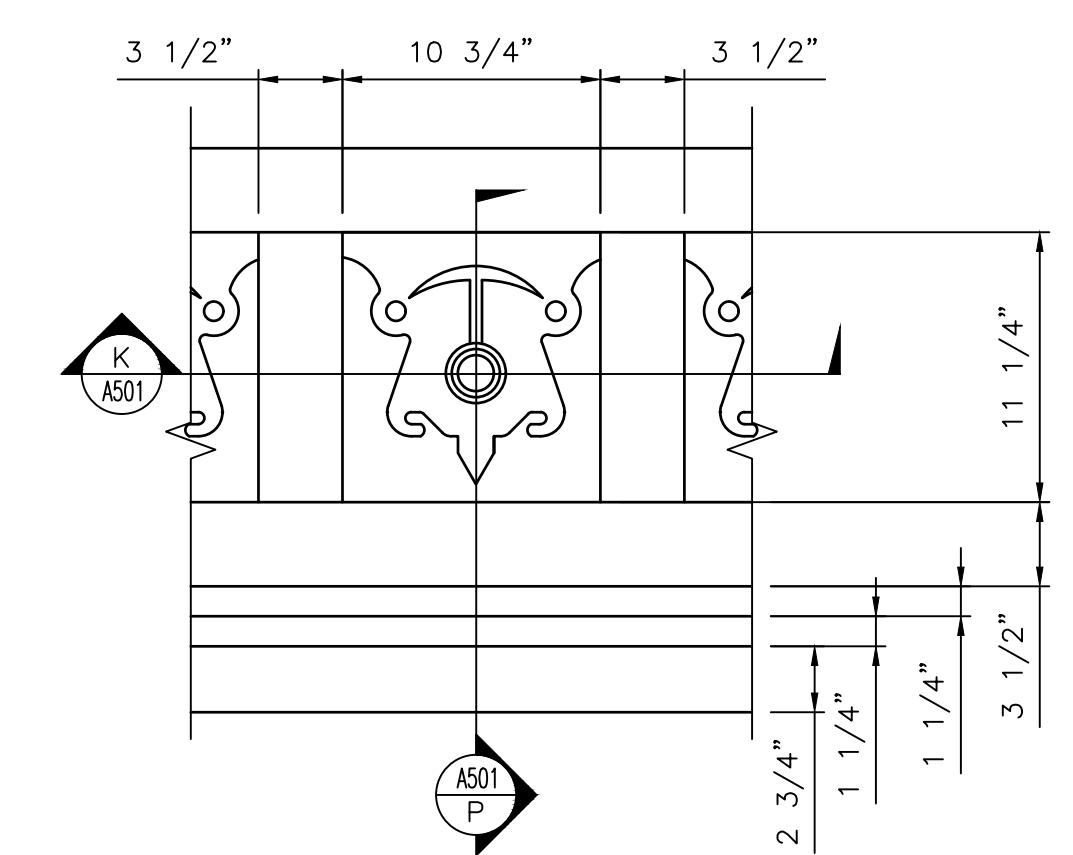
J INTEGRAL GUTTER DETAIL
 XXX A501 SCALE: 3" = 1'-0"



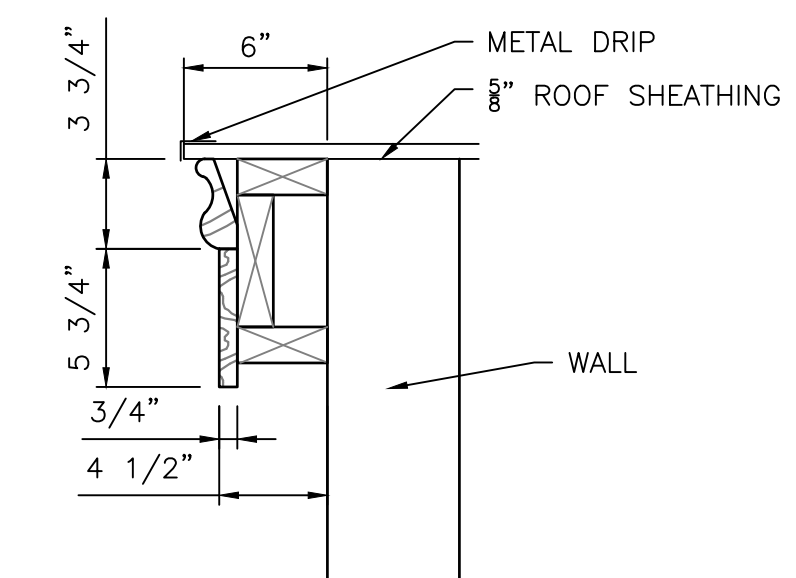
K FRIEZE SECTION EW
 K/A501 A501 SCALE: 1 1/2" = 1'-0"



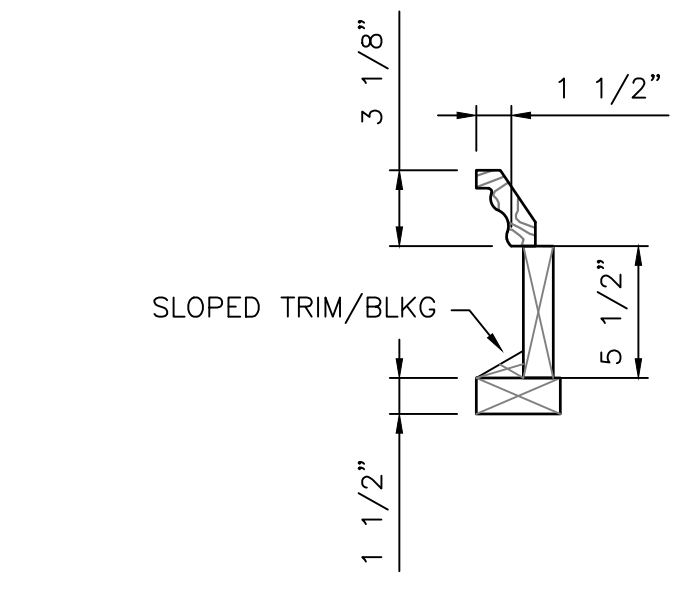
P FRIEZE SECTION NS
 K/A501 A501 SCALE: 1 1/2" = 1'-0"



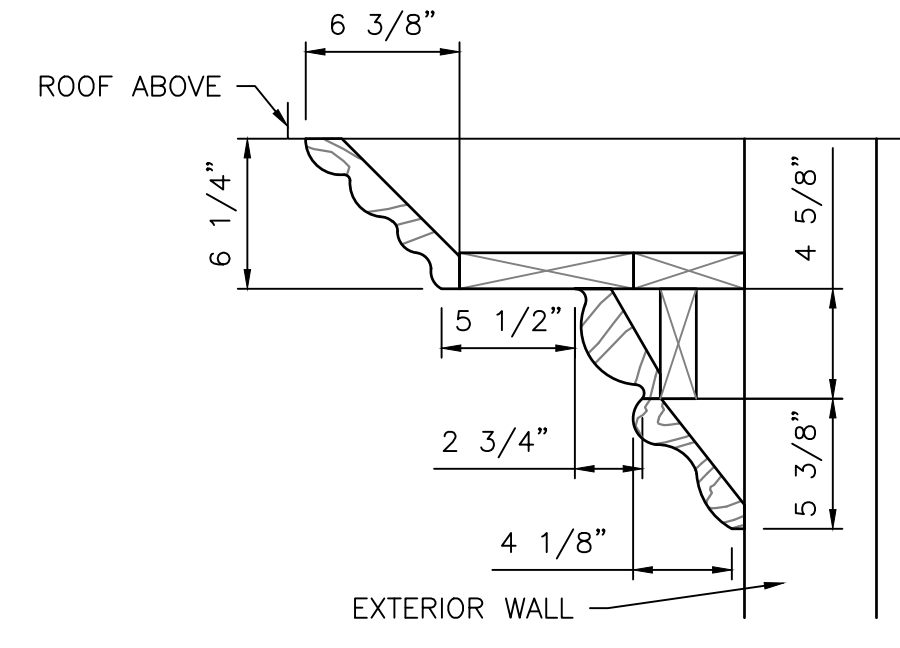
K FRIEZE ELEVATION
 2/A203 A501 SCALE: 1 1/2" = 1'-0"



L SHED ROOF TRIM DETAIL
 2/A203 A501 SCALE: 1 1/2" = 1'-0"

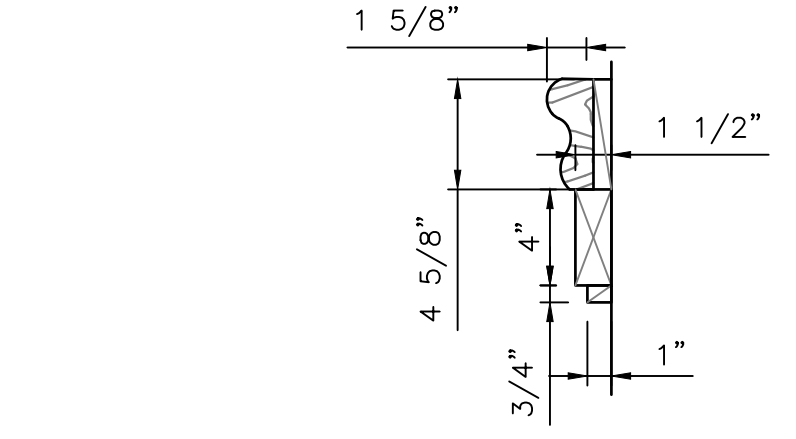


H INTERIOR TRIM DETAIL
 2/A201 A501 SCALE: 1 1/2" = 1'-0"

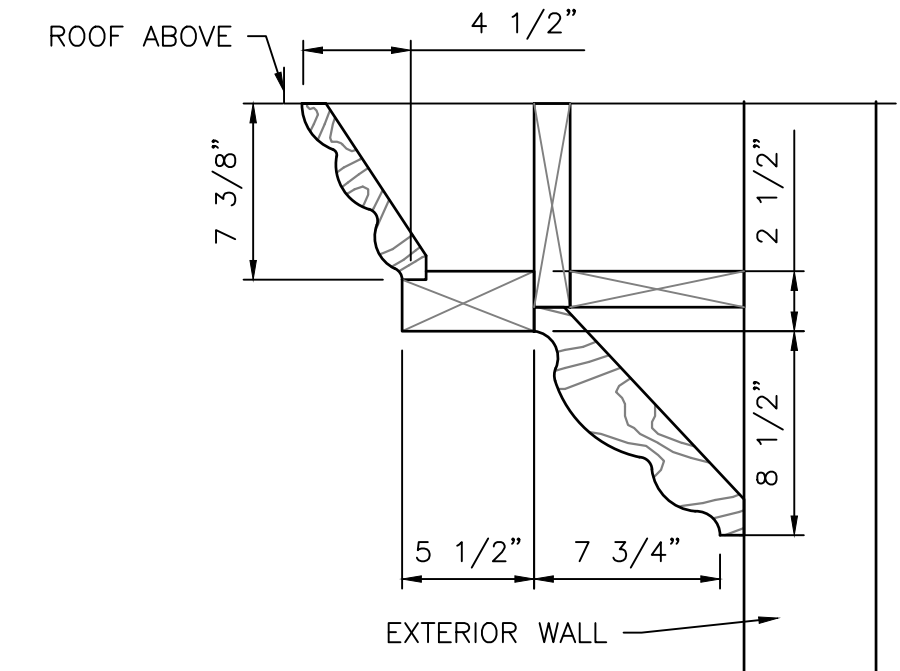


G CORNICE DETAIL
 2/A201 A501 SCALE: 1 1/2" = 1'-0"

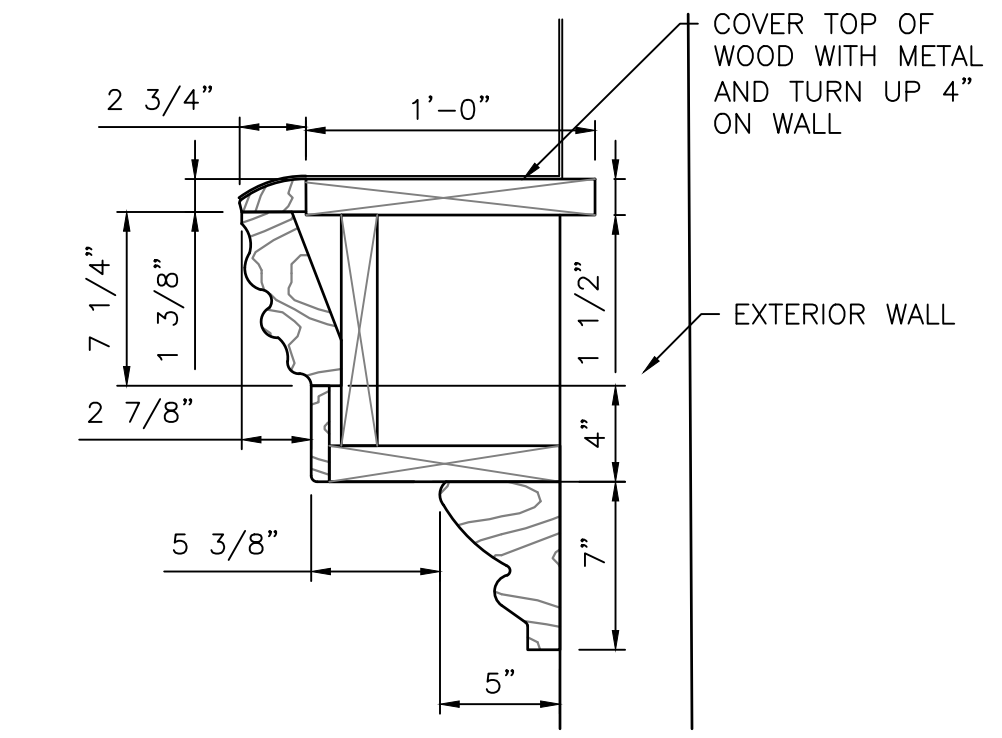
- GENERAL NOTES:**
- CONTRACTOR TO REMOVE AND REPLACE ALL BURNT/CHARRED WOOD.
 - CONTRACTOR SHALL REMOVE ALL WOOD FRAMING DOWN TO THE TOP OF MASONRY, EXCEPT IN THE TURRET. SEE SPECIFIC NOTES ON THE TURRET ON THE DRAWINGS.
 - ALL DETAILS AND MEASUREMENTS ARE BASED ON LIMITED ACCESS TO ACTUAL TRIM, DORMERS, ETC. CONTRACTOR SHALL FIELD MEASURE AND VERIFY EXACT PROFILE OF ALL TRIM AND MOLDINGS.
 - CONTRACTOR SHALL REMOVE REMAINING SECTIONS OF DORMERS AND TRIM SHOWN TO BE REMOVED AND PLACE ON THE SITE SO THAT MOLDINGS AND DETAILS CAN BE MEASURED EXACTLY.
 - PREPARE AND PAINT ALL NEW AND RESTORED WOODWORK INCLUDING: FRIEZE, FASCIA, SOFFITS, CEDAR SINGLES, WINDOWS, AND METAL TRIM ASSOCIATED WITH BUILT-IN GUTTERS.



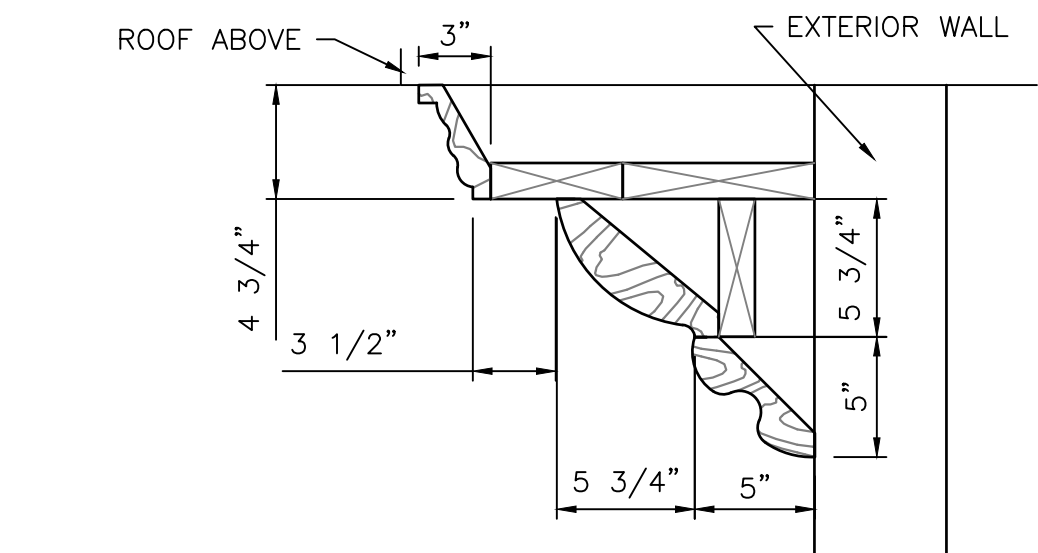
D WINDOW ARC DETAIL
 3/A202 A501 SCALE: 1 1/2" = 1'-0"



C DORMER DETAIL
 3/A202 A501 SCALE: 1 1/2" = 1'-0"



B CORNICE DETAIL
 2/A201 A501 SCALE: 1 1/2" = 1'-0"



A DORMER DETAIL
 2/A202 A501 SCALE: 1 1/2" = 1'-0"

| Rev. | Description | By | Date |
|------|---------------------------------|-----|----------|
| A | ISSUED FOR PERMITS/CONSTRUCTION | SGS | 11/16/21 |

Drawing Description
 CITY OF RAVENSWOOD
 212 MULBERRY STREET RAVENSWOOD, WV
 MCINTOSH HOUSE RENOVATION
 MOLDING DETAILS

| | |
|--------------|---------|
| Project: | 2211052 |
| Designed By: | CPM |
| Drawn By: | CPM |
| Checked By: | SGS |
| Scale: | - |
| Plot Date: | - |
| Revision: | - |

Drawing Number:
A501